

Emerge Illuminates Gensler Sign

Emerge/DDP, a leader in engineered LED solutions, has engineered a solution for Gensler Architects.

For their new offices in downtown Los Angeles, global design firm Gensler created a bold concept for the monument sign at their building's entry. The unique design would flood the sign's interior with the firm's distinct "Gensler red." This presented a challenge to the design team in finding the right LED product that could produce this specific color in a vibrant, even glow.



Glumac engineers took on the challenge of lighting the monument sign, with senior lighting designer Carlos Inclan leading the effort. Carlos searched for a fixture that would throw as much red light as possible, while maintaining solid optical control. Most of the product offerings from current manufacturers did not produce the "wow" factor he was looking for.

As the project neared completion without a strong solution, Carlos found EmERGE. Carlos collaborated with Gensler's environmental designer Jeff Fukawa to mock up a custom red LED Washgraze. The result was an even illumination, with no dark or hot spots, that outperformed every fixture previously explored on the project.

Ultimately the team utilized WashgrazeLV, with its tighter optical control and line voltage operation. WashgrazeLV was the industry's best solution, and gave the "wow" factor both Glumac and Gensler were seeking.

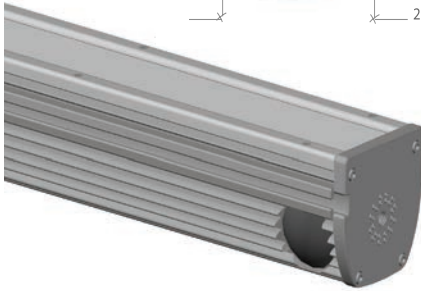
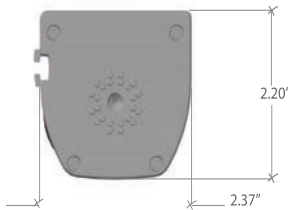


Late to the game, and working with a custom fixture, EmERGE Lighting was able to deliver. The result is a happy client, and the brightest Gensler sign to date.

For more information about EmERGE Lighting go to www.emergelighting.com or contact us at (310) 640-0442.

emerge
DDP LED LIGHTING





Catalog Number: WGLV 48 AF 18 17WF CC 12 LFT 504391	
Notes: GENSLER	Type:

WashGrazeLV Line Voltage

APPLICATIONS

NO REMOTE DRIVER REQUIRED. Emerge WashGrazeLV (LineVoltage) is a **Wet Location**, high performance luminaire designed to create continuous glowing illumination lines for facades, wall wash and wall grazing including accent highlighting. Designers can select many color temperature options along with up to six beam angles to meet intricate lighting requirements. The slim profile makes WashGraze LV easy to specify in almost any architectural lighting detail. WashGraze LV is intended for line voltage operation, with an input voltage range of 100VAC to 277VAC, making it compatible with almost any standard lighting infrastructure. WashGraze LV is offered in 4 different lumen outputs depending on watt and color temperature. All Emerge Lighting products are **MANUFACTURED IN AMERICA** and can be used to help meet your ARRA requirements.

PERFORMANCE

	8WF	17WF
Light Output	425 lm/ft (Cool White) 300 lm/ft (Warm White)	850 lm/ft (Cool White) 600 lm/ft (Warm White)
Efficacy	50 lm/wt (Cool White) 35 lm/wt (Warm White)	50 lm/wt (Cool White) 35 lm/wt (Warm White)
Temp. Range	-22F to 122F	-22F to 122F
CRI	75 (Cool White) 80 (Warm White)	75 (Cool White) 80 (Warm White)
Run Lengths	110 ft at 120VAC 230 ft @ 240VAC 266 ft @ 277VAC	55 ft at 120VAC 115 ft at 240VAC 133ft at 277VAC

WGLV	48	AF	18	17WF
MODEL LED WashGraze WGLV	LENGTH⁽¹⁾ (11.98") 12 (23.98") 24 (35.98") 36 (47.98") 48	FINISH Aluminum AF Custom Finish CF (Consult Factory)	BEAM ANGLE⁽²⁾ 16° X 16° 16 18° X 48° 18 24° X 24° 24 40° X 40° 40 60° X 60° 60 120° X 120° 120	POWER 8 wt/ft 8WF 17 wt/ft 17WF
CC	12	LFT		504391

COLOR ⁽³⁾	FEED CABLE	ELECTRICAL FEED	Options	BRACKETS ⁽⁵⁾
Warm White 27K	6" Wire 06	Left Feed Terminate LFT	Power Cables ⁽⁴⁾ 504823-XX 3E	504391
Warm White 30K	12" Wire 12	Right Feed Terminate RFT	Extension Cable 504824-XX 3R	504392
Neutral White 35K	18" Wire 18	Left Feed Continuous Row LFC		FM 504393
Cool White 42K	24" Wire 24	Right Feed Continuous Row RFC		11E 504394
Cool White 53K				11R 504395
Cool White 63K				Custom Bracket CB
Static Color CC				*See next page for layout



1.Run lengths Vary based on Watts per foot and Voltage

2.See Photometric Charts

3.Contact factory for color options. Color temperature may vary +/- 200K.

4. Replace XX with corresponding cable length from 1ft to 10ft. For longer lengths contact the factory.

5. For end brackets add 1" per fixture. For rear add 0.5" per fixture. For custom brack contact the factory.